



македонско американска  
алумни асоцијација  
macedonian american  
alumni association



# Status – quo Analysis Reports

Activity 1 of the



**Project:**

## **Equal Access through Service Learning for Persons with Disabilities**

Project Leader

**Ana Lazarevska**

Skopje, 2012

**Note:** The texts herein, in general, are included as originally submitted by the authors, i.e. they were not subject to contextual changes.

# **Status – quo Analysis Reports**

**Activity 1 of the Project:**

## **Equal Access through Service Learning for Persons with Disabilities**

**Status quo analysis  
on the physical accessibility of public and other buildings  
in the cities of Prilep and Bitola, the Republic of Macedonia**

Author:

Gjoko Zdraveski

Bitola/Prilep/Skopje, 2012

**Note:** The texts included herein, in general, are as originally submitted by the authors, i.e. they were not subject to contextual changes.

## Contents

Contents.....	3
1. INTRODUCTION.....	3
2. The City of BITOLA.....	3
2.1. Schools.....	3
2.2. Public services.....	8
2.3. Sports.....	16
2.4. Transport /movement.....	17
2.5. Banks.....	18
3. City of PRILEP.....	19
3.1. Education.....	19
3.2. Public services.....	22
3.3. Banks.....	28
3.4. Sports – entertainment.....	31
3.5. Transport-movement.....	32
4. CONCLUSION.....	33

## 1. INTRODUCTION

This research is made to investigate how the cities of Prilep and Bitola, enable people with physical disabilities to move freely and to simplify their life. The pictures that follow, will show how prevalent these extenuating circumstances are.

## 2. The City of BITOLA

### 2.1. Schools



Primary School "Kole Kaninski" – Bitola



Primary school "Dr Trifun Panovski – Bitola



Secondary school "Josip Broz Tito" - Bitola





Music school - Bitola



Primary school "Stiv Naumov" - Bitola



Pedagogical Faculty – Bitola



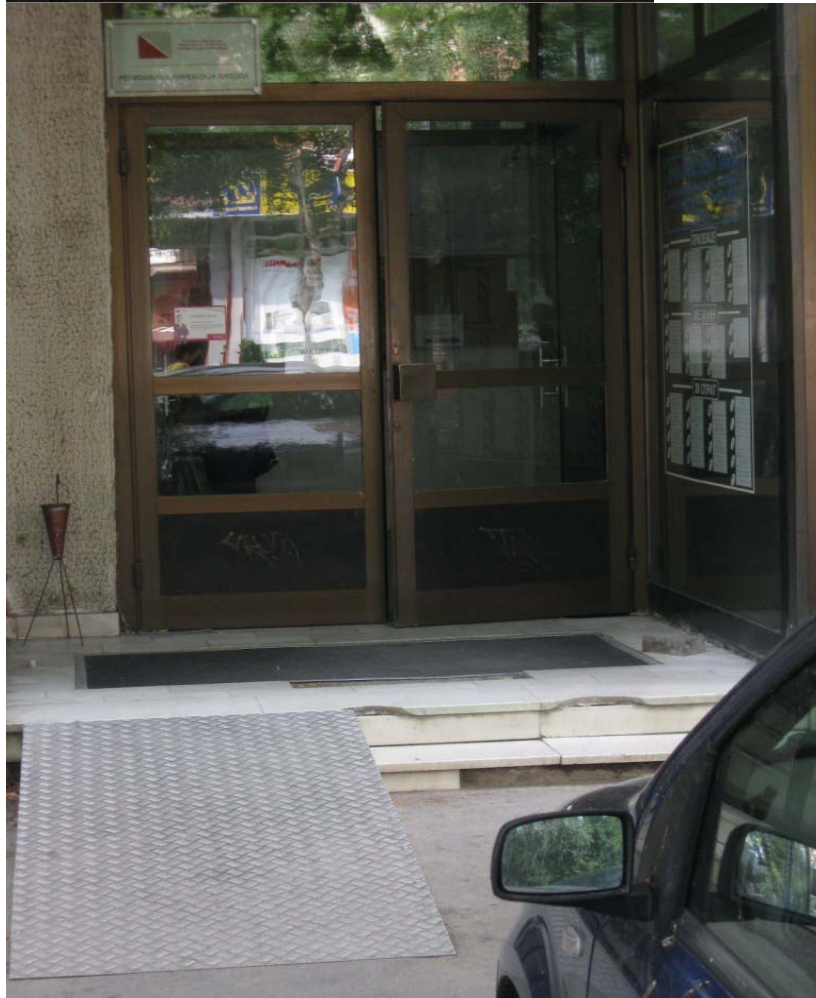
Technical Faculty - Bitola



Access to the theater and primary school Goce Delchev  
(a common access because it share a common yard - rear entry)



## 2.2. Public services



Administration of Public Revenue - Bitola



Pharmacy Zegin – Bitola



Center for Social care- Bitola





Employment Agency – Bitola



Home for National Health (Dispensary for children) -Bitola



Home for National Health (rear entrance) and parking for persons with disabilities – Bitola



Municipal Court - Bitola





Approach to PC Strezevo – Bitola



Pharmacy Elixir - Bitola



Pension, disability and health insurance (the entrance of the building is on ground floor) – Bitola



Approach to the Cultural Center - Bitola





Approach to the National Theatre – Bitola



Approach to City Library "Ss. Kliment Ohridski" - Bitola





Landregistry and waterworks (are located in the same building that doesn't have approach for persons with disabilities) – Bitola



Infectious ward of the hospital - Bitola

### 2.3. Sports



Sports Hall - Bitola

## 2.4. Transport /movement

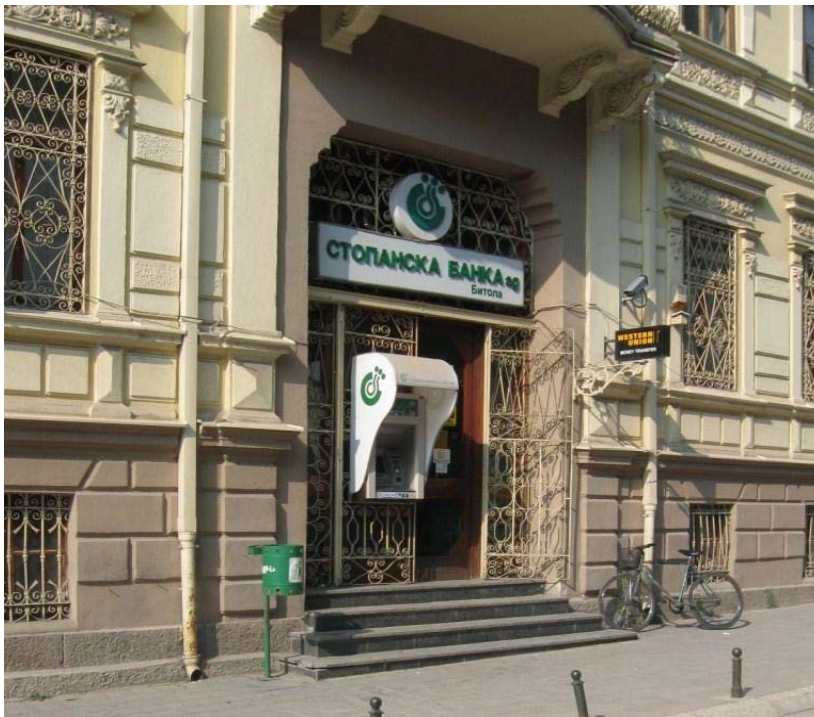




## 2.5. Banks



TTK bank - Bitola



Stopanska Bank - Bitola

### 3. City of PRILEP

#### 3.1. Education



Secondary School "Kuzman Josifoski – Pitu" - Prilep





Primary School "Rampo Levkata" – Prilep



Primary School "Koco Racin" in settlement "Rid" - Prilep



Secondary School "Riste Risteski – Ricko" - Prilep

### 3.2. Public services



Health Centre - Prilep





Back entrance of the general hospital "Borka Talesmki" - Prilep



Access to the Cultural Center "Marko Cepenkov" - Prilep





The Pension and Disability Fund, the Health Insurance Fund and Central Registry – Prilep. Share the same building with different entrance. The building is at ground level, immediately after the entrance there are steps but access for people with disabilities is not available.





City library "Borka Taleski" - Prilep



Ministry of Defence branch - Prilep





Employment Agency – Prilep



Waterworks and canalization - Prilep





Landregistry - Prilep

### 3.3. Banks



Halk bank – Prilep



Tutunska bank - Prilep





Pro Credit Bank - Prilep



Sparcasse bank - Prilep



Alpha Bank - Prilep



Stopanska Bank - Prilep



### 3.4. Sports – entertainment



Sports Hall - Prilep

### 3.5. Transport-movement







The city has built many new approaches for persons with disabilities. Most of them are in the city center where there are traffic lights with audible signal for blind.

#### **4. CONCLUSION**

The photographs of this research clearly show that a significant number of locations, especially in the centers of the cities of Bitola and Prilep are accessible from outside for the for people with physical disabilities. The indoor environment was not subject to this research, due to certain objective and subjective limitations. During the research we noticed that almost all newly built buildings, playgrounds or parks have built ramps for easier movement of people with physical disabilities while the older buildings need to be adapted to become accessible. We hope that these places will provide easier access.