



македонско американска  
алумни асоцијација  
macedonian american  
alumni association



## Status – quo Analysis Reports

Activity 1 of the



Project:

### Equal Access through Service Learning for Persons with Disabilities

Split/Skopje, 2012

**Note:** The texts included herein, in general, are as originally submitted by the authors, i.e. they were not subject to contextual changes.

# Equal access through Service Learning for Persons with disabilities

## Status Quo Analysis University of Split



Project leader:

Ph.D. Ivana Bilic

Students: Andrea Raguz

Doris Vulic

Monika Shkreli

## Table of Contents

University Of Split .....	4
Access to Faculties – Architectural Barriers .....	6
Faculty of Economics .....	6
Faculty of Law .....	7
Faculty of Electrical Engineering, Mechanical Engineering and Naval Architecture .....	8
Faculty of Architecture.....	9
Faculty of Natural Sciences, Mathematics and Education .....	10
University Library.....	10
Students Accommodation in Split .....	11
Student Residence „Hostel“ .....	11
Accommodation for High School Students.....	14
2. Sports Facilities .....	16
3. Courts .....	18
Commercial Court .....	19
Magistrates Court.....	19
Municipality .....	19
4. Banks.....	20
Raiffeisen, Erste bank .....	20
5. Post Office .....	22
6. Pharmacy .....	23
7. Hospitals.....	24
7.1. Hospital „Stari plac“ .....	24
7.2. Hospital „KRIŽINE“ .....	25
7.3. Hospital “Firule” .....	26
8. Gallery of Fine Arts Split.....	28
9. Churches .....	30
The Church of Our Lady of Good Health.....	30
The Church of St. Francis .....	30
Croatian national teatre .....	31
Beaches.....	32
Beach „Obojena svijetlost“ .....	32
Beach „Prve vode“ .....	34
Traffic and Public Transport.....	35
Traffic Lights.....	35
Public Transport (BUS) .....	35
Bus Terminal .....	36
Catamaran .....	36
Shopping Centers .....	37
Conclusion .....	39

## **University Of Split**

The University of Split is the second university by size in Croatia, encompasses eleven faculties and one academy, and departments. University of Split was established in 1974 and currently have around 24 000 students. University of Split employed around 1200 professors (from assistant professor to full professors), 250 research and teaching assistants and 650 staff members.

### **Faculties and academy on University of Split are:**

1. Faculty of Economics
2. Faculty of Natural Sciences, Mathematics and Education
3. Faculty of Electrical Engineering, Mechanical Engineering and Naval Architecture
4. Faculty of Chemical Technology
5. Faculty of Law
6. Catholic Faculty of Theology
7. Faculty of Civil Engineering and Architecture
8. Faculty of Medicine
9. Faculty of Philosophy
10. Faculty of Maritime Studies
11. Faculty of Kinesiology
12. Academy of Arts

### **Although, on University of Split there are four University Departments:**

- Center for polytechnic studies
- Center for Sea studies
- Study of Mediterranean agriculture
- Center for forensic studies
- University department of the health

Despite the positive legislative framework in Croatia, there is no obligation for institution of higher education to ensure access for persons with disabilities, and there is no obligation to develop rulebook which can guide professors in their work with disable students. Furthermore, raising awareness of society in communication with persons with disabilities is necessary and keeping status of disable person even when they have a job need to be regulated by law.

Last two years, on University of Split we have institution of 'Trustee for PwDs' on each faculty, what we can assume as a kind of support for PwDs on our University. Even though, we are witnessing of an increased number of persons with disabilities on our University, we still do not have adjusted curricula or strategy of inclusion of PwDs in high education.

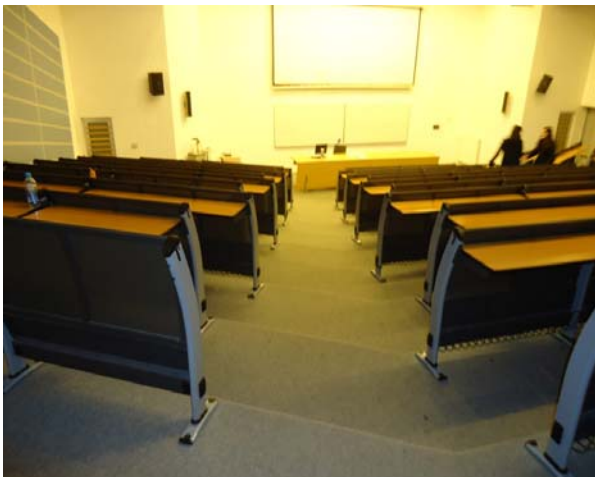


## Access to Faculties – Architectural Barriers

### *Faculty of Economics*

Faculty of Economics, University of Split is situated within the university campus and in most segments is accessible for persons with disabilities.

Main entrance is completely adapted for person with disabilities. All faculty halls are accessible for students with disabilities, particularly for students in wheelchairs. Since 2002, when new



**Picture 2 : Small amphitheater**

building in University campus has been opened we have more and more students with disabilities each year. Special toilet and all faculties' services are situated on the ground floor. Main problem which can occurred is presentation is some halls and amphitheatres, if person in wheelchair need to give presentation and try to approach main desk there are lots of stairs between, without possibilities of ramp installation in future. Building is equipped with several elevators, which are adapted to persons with disabilities by their size.



**Picture 1 : Main entrance**

building in University campus has been opened we have more and more students with disabilities each year. Special toilet and all faculties' services are situated on the ground floor. Main problem which can occurred is presentation is some halls and

## ***Faculty of Law***

In 2011 they have some reconstruction work and constructed new classrooms with access for PwDs. They pay attention to existing legislation regarding the organization of space and security, and accessibility for some people with disabilities. The main entrance is equipped with corresponding concrete ramp, adjusted for people in wheelchairs as well as the automatic door system.

Communication within the faculty facility is accessible for persons with disabilities, they have lecture and students' registry office is on the ground level. Other classrooms, situated on the higher floors have accessible by modern automated ramp for wheelchairs, as well as a staircase with a protective rubber grip with traction control. Classrooms are equipped by ergonomic flexible chairs; and in this moment the main problem for students with



**Picture 3 : Main entrance**

disabilities is lack of toilets' adjusted for PwDs.

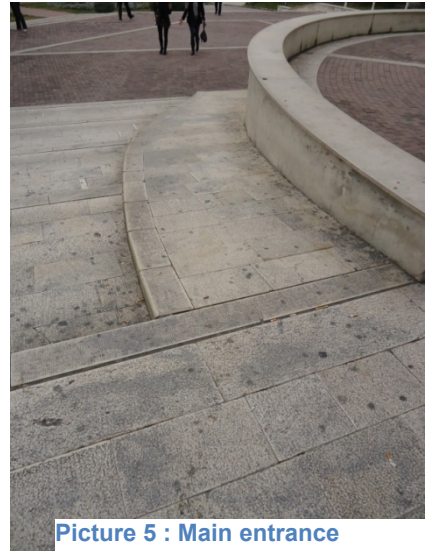


**Picture 4 : Stair elevator**

## ***Faculty of Electrical Engineering, Mechanical Engineering and Naval Architecture***

At the Faculty of Electrical Engineering, Mechanical Engineering and Naval Architecture, main entrance is completely adjusted for PwDs access.

Main problem which could happened for students, PwDs is presentation, in some in amphitheatres, if person in wheelchair need to give presentation and try to approach main desk it is impossible so they need to give their presentations from the top of the hall. Moreover, on this faculty toilet for person with disabilities are not available, but there are some elevators that are adapted by their size.



**Picture 5 : Main entrance**



**Picture 6 : FESB Elevators**



## ***Faculty of Architecture***

Faculty of Architecture is located in the west part of university campus. The main entrance is not adopted for students in wheelchair or even temporarily disabled students.

Amphitheatres are not accessible and student with disabilities, particularly student in wheelchairs can face the same situation like we mentioned before. When they need to give presentation or maybe received their diplomas they need to do that from

the top of the amphitheatres, what is so far from equal and decent situation.



Picture 7 : Amphitheatre

Furthermore, Faculty of architecture is equipped with elevators, but they do not have restrooms adjusted for PwDs with mobility issues.



Picture 8 : Faculty of Architecture

## ***Faculty of Natural Sciences, Mathematics and Education***

Faculty of Science is located outside of university campus and situated in an old building, removal in new, more adjusted building is expected this year. Till then, PwDs could face many problems of physical accessibility.

Old building such this one have no possibilities to adjusting their toilets or elevators. We cannot say anything about new building, but regarding to new Construction Law this building need to be equipped in a physically accessible way.



**Picture 9 : Main elevator**

## ***University Library***

University library was built few years ago and this building is completely adapted for persons with disabilities. Access to the library is provided with ramp so people with mobility issues can reach this building easily. The rest of the building is equipped with adjusted halls, elevators, doors with sensors and restrooms.



**Picture 10 : Main entrance**

## Students Accommodation in Split

### *Student Residence „Hostel“*



Picture 11 : Main entrance

Student residences are located at the foot of Marjan hill and it has population of 400 students. Student residences are well equipped with physical access and adjusted rooms. In front of student residence is parking lot for people with disabilities.

The main entrance of student



Picture 12 : Parking lot



residence „Hostel” is equipped with sag on the floor and handrails that can help in moving students with disabilities.



Picture 13 : Main entrance sag

Students restaurant is also equipped with the sag on the floor and handrails. Space inside the restaurant is adapted for students with disabilities.



Picture 14 : Students restaurant

Student residence has elevator for students who can't use the stairs.



Picture 15 : Elevator

Students residence „Hostel” has completely adapted rooms and toilets for students with disabilities on first floor. Also, room furniture is adjusted for use from wheelchairs. Adjusted bathroom in students residence „Hostel” are bigger and wider than in other rooms. Sink and faucet are adapted to fit needs of students with disabilities.



Picture 16 : Students room

Bathroom has open able chair and handrail for students with disabilities. Faucet and shower are furnished to the height that is adapted for students with disabilities.



Picture 17 : Bathroom



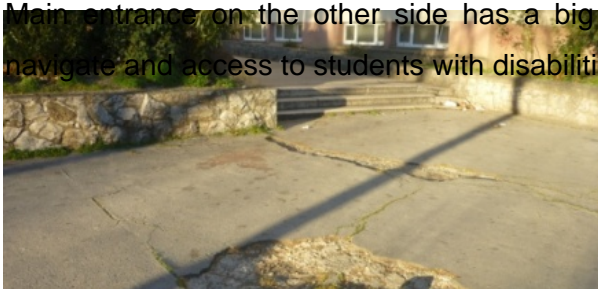
## ***Accommodation for High School Students***

Accommodation for high school students is provided in one old, 9 floors building. Even though, a high school usually lives with their families in Croatia, some of them could be PwDs from outside of Split. This building is provided with sag on main entrances but without handrails. Boarding school has one parking lot for staff parking space for people with disabilities does not exist.



**Picture 18 : Parking lot**

Main entrance on the other side has a big damage in the concrete making it difficult to navigate and access to students with disabilities.



**Picture 19 : Damaged concrete in front of main entrance**



letter for blind students. Boarding school Split has rooms that are not adapted for students with disabilities.

Size of elevator is adapted for students with disabilities, on the buttons in the elevator numbers of floors were written on braille



**Picture 20 : Elevator**

Bathroom is common to all students who live on one floor and bathrooms aren't adapted for students with disabilities. Access to shower cabin is too high and there no handrails for students with disabilities. Sink and taps aren't adapted for students with disabilities.



Picture 21 : Bathroom

Canteen at Boarding school is adapted for student with disabilities and without any obstacles and difficulties students with disabilities can access the bar where there is a food.



Picture 22 : Students restaurant

## Sports Facilities

**City pools „Poljud“** is a sports and recreational facility that is [Picture 23 : Poljud pools](#) accessible to paraplegics. Entrance to the pools is designated by Café bar Vanilla. User of pools comes directly to the locker room. Locker rooms are adapted for people with disabilities and they have their own special benches, sinks and showers. Locker room and pool share the same door which is accessible and easy to use. Parking lot is located just 3 meters away from the entrance and they are connected with a ramp. Entrance to “Poljud” – Swimming pool for people with disabilities is free.

**Spladium Arena** – Entrance and concept of Spladium is configured so that people with disabilities can have maximum accessibility to its contents. Special ramps and handrails are installed throughout the building. Spladium arena contains special rooms, seats and elevators that serve only to people with disabilities.



[Picture 24 : Elevators](#)

**Spaladium Arena Gym** – access to the gym is not suited for people with disabilities due to the large number of stairs. Therefore people with disabilities require assistance of another person. The staff is polite and willing to help and all gym equipment is accessible to users with disabilities. Gym is not divided by any stairs or narrow passes so that users with disabilities can access any part of gym with ease. Basketball court which is located in the gym is accessible to people with disabilities because the gym and the basketball court are both connected with an elevator. Parking is easy to access.



Picture 25 : Spaladium Arena Gym



Picture 26 : Spaladium arena gym



## Courts

**Municipal Court „Dračevac“**- is not adapted for people with disabilities. There are no elevators or any ways to install them, but handrails are installed, but they are not ergonomically shaped and are inadequate for people with disabilities. There is no ramp at the entrance to the court; there is only a double sided handrail which was installed after the president of the court was repeatedly warned about the inadequacy of accessing the building. There is a double door; the first one is a massive iron door which people in wheelchair and people whose hands aren't fully functioning can't open on their own.



Picture 27 :  
Municipal  
Court  
"Dračevac"

Litigation Department and the Criminal Division are completely inaccessible to persons with disabilities. There are marked parking spots for people with disabilities.

**County Court** - On the very entrance there is a concrete ramp which allows passage for people in wheelchairs, however the ramp is blocked almost every day by parked cars on a nearby parking.



Picture 28 : County Court



**Commercial Court-** Does not possess elevators, and there are stairs everywhere. Handrail is placed on the entrance; however it is difficult to access it because there is no ramp.

**Magistrate Court-** Is absolutely not adapted to people with disabilities or older people.

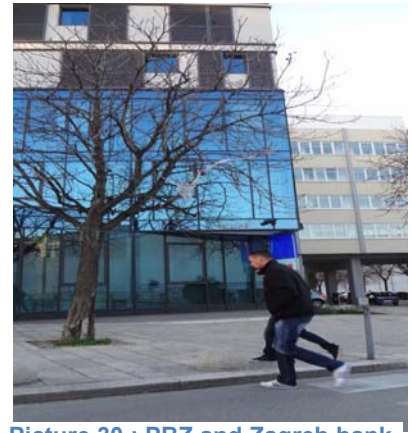
**Municipality-** There is a ramp which is not placed at the entrance and to use it you need to inform the guard inside it. This means that the person with disabilities would have to be accompanied by somebody. Once you enter the building, access to elevators is enabled by concrete ramps.



Picture 29 : Commercial Court

## Banks

**Raiffeisen bank** - People with disabilities can approach the bank and make their payments easy just like any other person. Estimated number of parking spaces for people with disabilities in front of the bank is sufficient; however, there is a problem with improper parking by individuals who do not belong to any group of people with disabilities. Bank doors open with the sensor, which also allows easy access to the counters. There is a handrail to help people with disabilities. It should be noted that there are no steps, so people in wheelchairs can move freely.



Picture 30 : PBZ and Zagreb bank

**PBZ and Zagreb bank** - has maximum access. There are 3 parking spots available next to the bank but there is also a problem that they are rarely free. Bank has built in concrete ramps and entrance to the bank has handrails. Bank has installed sliding doors.

**Split bank on the „Riva“** - One of the banks that does not have any way of access. Stairs at the entrance prevent free entrance to the bank; also there is no ramp, not even handrails. Parking places are at the beginning of the promenade which is very inconvenient for people with disabilities.



Picture 31 : Split bank on the "Riva"

**Erste bank** - falls into the category of banks which can be accessed by people with disabilities. Erste Bank is a new bank, and as such is almost fully adapted for people with disabilities. Concrete ramp is built in the entrance to the bank. The Bank has a double entry, but both operate on the basis of sensors. There are no stairs and therefore there are no obstacles for people in wheelchairs. Parking is a problem because it is not located near the bank.



Picture 32 : Erste bank

## Post Office

Post office located in the center of town, has a large entrance and a number of stairs where climbing is easier if you use handrail on the side.

Space inside is not adapted for people with disabilities like and space outside because there are no parking places for people with disabilities.



Picture 33 : Main entrance



Picture 34 : Handrail and stairs



Picture 35 : Inside the building

## Pharmacy

Main pharmacy is located in the center of town and it is one of the best that is fully adapted for people with disabilities. Pharmacy has parking places and the main entrance is adapted for people with disabilities where we have a tin sag and handrail. Space inside pharmacy, heights of shelf and cash desk is also adapted for people with disabilities.



Picture 36 : Tin sag and space inside pharmacy



## Hospitals

### *Hospital „Stari plac“*

Hospital „Stari Plac“ is fully adapted for people with disabilities. At the main entrance there are handrails and sag on the floor. The hospital „Stari plac “ has three floors, equipped with elevators which people with disabilities can use. Hospital also has parking spaces for people with disabilities.



Picture 37 : Hospital "Stari plac"

## ***Hospital „KRIŽINE“***

When we visited the hospital Križine we talked to a lady who is responsible for adapting the space within hospital for people with disabilities, and we found out that hospital Križine is not adapted for people with disabilities.

Only thing that is adapted are the parking places for people with disabilities. People with disabilities who come to Križine are forced to use someone's help if they want get to the doctor. Hospital Križine is very badly equipped and people in wheelchairs must have someone who can transfer them over the stairs because hospital Križine does not have elevator.



Picture 38 : Hospital "Križine"



Picture 39 : Elevator and parking space

## **Hospital "Firule"**



**Picture 40 : Hospital Grounds**

On the very entrance of the hospital grounds there is an Emergency department which is easily accessible to disabled people by concrete ramps and handrails. Emergency department vehicles are equipped with special wheelchairs for disabled people.



Furthermore, oncology is one of the best equipped departments in the hospital. There are ramps and handrails on every step.

Toilet facilities are properly equipped and accessible to all people with disabilities and elderly people.

The department is equipped with modern elevators and their usage is adjusted to people with disabilities.

Sidewalk depressions help people with disabilities to move from one department

**Picture 42 : "Firule" Hospital Toilet**

to another; however they are often blocked by parked vehicles.

As a very important issue worth mentioning is the very structure of the building where it is impossible to start any adaptations, the building is very old and some parts of it are obsolete. Parking spots for people with disabilities are on every corner and most of are on the back side of the new maternity hospital.



**Picture 43 : "Firule Hospital Bathrooms"**



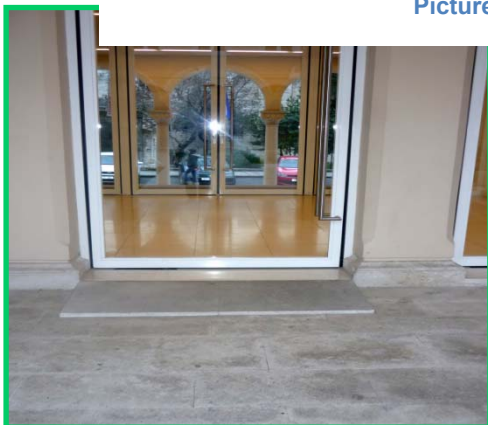
## Gallery of Fine Arts Split



Picture 44 : Main entrance

Gallery of Fine Arts Split is located in the center of town and space inside and outside are completely adapted for students with disabilities. Gallery of Fine Arts has a separate entrance suited for students with disabilities in which we have sag on the floor. Gallery also has own parking for students with disabilities. Space inside the gallery is fully adapted for students with disabilities. In every room there are sags on the floor and the doors are open automatically for easy movement.

Picture 45 : Space inside gallery



The gallery is equipped with latest equipment to facilitate access and movement in every room. Gallery has elevator and lift for people with disabilities. On the buttons in the lift numbers of floors were written on Braille letter for blind students.

On the first floor of the Gallery is fully adapted toilet for students with disabilities.



Picture 47 : Bathroom

Toilet has a water tap, sink, handrails and holders that are adapted for students with disabilities.

Picture 46 : Elevators



## Churches

***The Church of Our Lady of Good Health*** - falls into the category of churches, which are suitable for disabled people. The entrance to the church is on the side. Church has built in concrete ramps; main doors are a bit heavy. Door can be ignored because there are always few nuns in vicinity. Ramp and parking spots are right in front of the main entrance to the Church.

***The Church of St. Francis*** -.partially equipped for people with disabilities. Handrails are installed; however they are inadequate for people with disabilities. The church also has a second entrance, which also begins with a couple of steps. Parking spaces for people with disabilities are located next to the Church and it is extremely convenient. Judging from the second entrance into the Church, which represents less of a problem, it is possible to hear Mass, but help of other people is inevitable.

***The Church of St. Anthony*** - is partially equipped for people with disabilities. On the front side of the church there are depressions that are needed for people in wheelchairs. The church has another entrance that begins with a few stairs. There is a parking lot near the church which has two parking spots for people with disabilities. Also there are no handrails or ramps.



Picture 48 : The Church of Our Lady of Good Health



Picture 49 : The Church of St. Francis



Picture 50 : Church of St. Anthony



## Croatian national theatre

Although at first glance we cannot see its flaws because this kind of cultural institution it is expected to be accessible to all who want access. The disadvantages begin with the steps at the very front of the entrance to the Croatian National Theatre. This is followed by heavy iron gates that are difficult to open. Grand hall is fragmented by multiple stairs that are not consistently accompanied by a handrail. It should be pointed out that the handrails are not suited for people with disabilities and they only serve as a precaution. People with disabilities certainly need the help of another person. Parking spaces are provided, but we are again pointing out improper parking of individuals without permits.

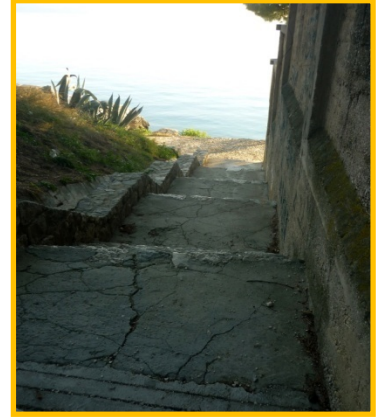
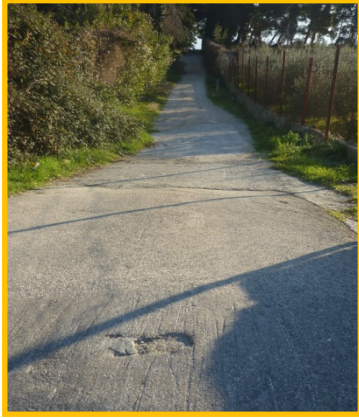


Picture 51 : Croatian National Theatre



## Beaches

### *Beach „Obojena svijetlost“*



Picture 52 : Main entrance

Colored beach is popular local beach at the foot of Marjan hill. Access to the beach is not adapted for people with disabilities and has a large number of steps with handrail on only one part of the stairs. Roads leading to the beach are not complete and there are large rocks that make it difficult to move.

Stairs on the beach have handrails that facilitates the movement of students with disabilities and handrail which is placed at the entrance to the sea in order to facilitate access to the sea. Path along the beach is full of rocks, holes and is very narrow. On the side of the path we have a great abyss and there is no protective fence. Without protective fence, with large



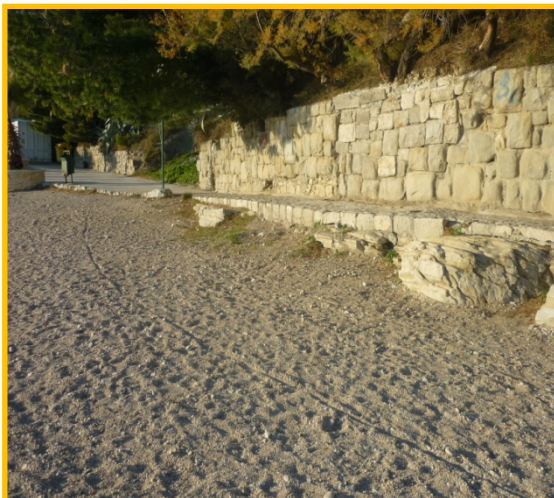
Picture 53 : Paths alongside beach

rock and holes path along the beach is very dangerous for people with disabilities.

Access to the beach isn't adapted for people with disabilities. Obstacle to the beach for persons with disabilities is wall, and people with disabilities need someone's help, how they could come to the beach.



Picture 54 : Stairs and entrance into the sea



Picture 55 : Access to the beach

Parking places on this beach doesn't exist and that creates one more problem for people with disabilities.



Picture 56 : Parking spaces



## ***Beach „Prve vode“***

Beach „Prve Vode“ is located near the student residence „Hostel“ and it is known as student's beach. Path that leads to the beach is downhill which is in very poor condition (large holes and stones). This beach isn't adapted for people with disabilities.



Picture 57 : Access to the beach



The Beach has a parking but there is not parking places for people with disabilities. At the entrance to the beach is an old fence that prevents the entry of students in wheelchairs.



Picture 58 : Old fence and parking lot

## Traffic and Public Transport

### *Traffic Lights*

The city of Split has traffic lights with sound that helps people with disabilities in movement in the streets. Split is the second largest city in Croatia and need to more invest in the devices with the audio signal because it is not enough to put them only on main roads in the town. Novelties in the streets of city Split are tactile surfaces on pavements and sag on the floor that help in movement blind person streets of town.



Picture 59 : Street of Split

### *Public Transport (BUS)*

Public transports (buses) are adapted for people with disabilities. Entrance in bus makes it easier a tin sag and handrails. Inside the bus we have a special places and headquarters for people with disabilities. In interview with driver we found out that are used very little and that exist only because law requires their existence in all public buses.



Picture 60 : Special adaptations (tin sag and handrails)



## ***Bus Terminal***

The main entrance and movement around the station are adapted for people with disabilities (they have sag on the floor) big drawback is that bus terminal is not equipped with a toilet for people with disabilities.



Picture 61 : Main entrance and and space inside

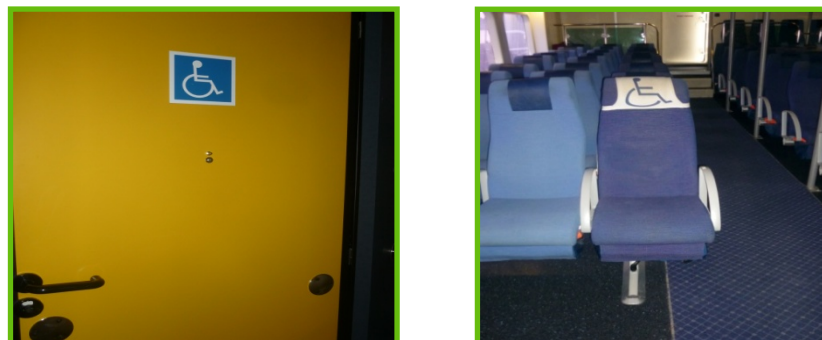
Bus terminal has a large parking lot and place for taxi but there aren't parking places for people with disabilities.



Picture 62 : Parking lot and outside space

## ***Catamaran***

Inside of catamaran there are special seats for people with disabilities and toilet for their needs. Catamaran doesn't have ramp or handrail for the entrance people with disabilities but the staff of catamaran with own hands helps people with disabilities to enter on catamaran.



Picture 63 : Toilet and Headrest

## Shopping Centers

### ***City Centre One***

Shopping center „City Center One“ is located at the exit of the town. It was built few years ago and completely adapted for persons with disabilities. Persons with disabilities can go to the center by bus.



Picture 64 : Main entrance

The center has several spacious lifts and specially toilet for the disabled. City Center One has a large parking and there are parking places for people with disabilities.

Picture 65 : Elevators Parking Spaces and Toilets



## ***Joker Shopping Centre***

Shopping center „Joker“ is located near center of the city. It is completely adapted for persons with disabilities. There are parking places for persons with disabilities in the garage of the center.



Picture 66 : Toilet and Elevator

There are toilets for persons with disabilities and two elevators. The number of elevators should be higher especially to disabled because it is large center.

## **Conclusion**

There are many facilities and institutions which are very old and they aren't adapted for persons with disabilities by their location and architecture. It is necessary a lot of money for their reconstruction and only some institutions and companies want to invest in their reconstruction. The biggest barriers in Split for persons with disabilities are architectural barriers that prevent their normal movement.

All institutions and public facilities must be adapted for persons with disabilities under the new law in the Republic of Croatia. The city of Split must invest more in facilities for reducing barriers for persons with disabilities and citizens must increase their awareness how to help people with disabilities to live a normal life like the rest people.